

## Tutorial – Hauppauge TV Card

OK the competition is over but that does not mean we should all stop trying to be helpful to each other.

A fellow member has requested information regarding how to record and then produce a DVD from the Hauppauge TV Card with DVD Movie Factory.

This member has version 3SE, However I only have Version 4 ( I have now upgraded from Version 1 – way overdue!!) and so I will details two methods of capture.

One is using DVDMF4, the other is to use WinTV2000 which is the software used with the Hauppauge TV Card.

### DVDMF4.

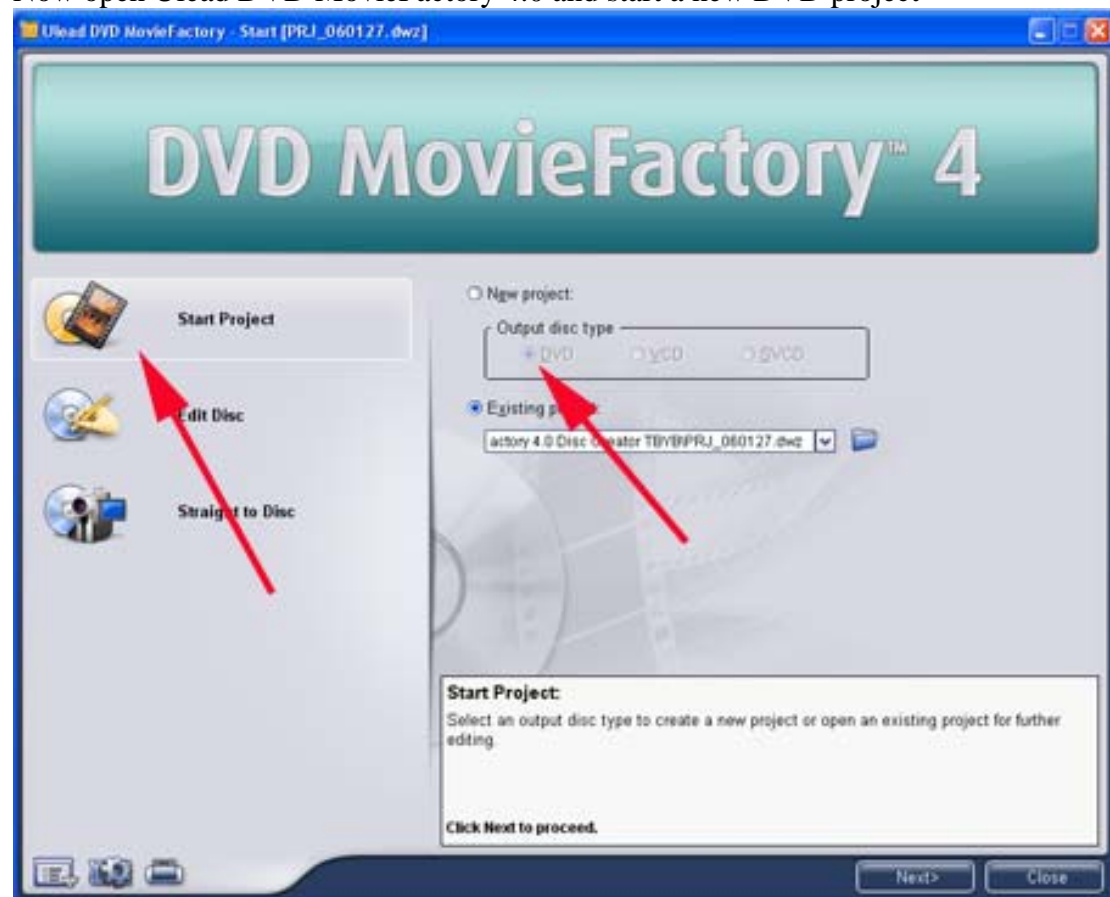
If you have not already done so go to the following location and download and install the following:-

[http://www.ulead.com/tech/dmf/dmf\\_ftp.htm](http://www.ulead.com/tech/dmf/dmf_ftp.htm)

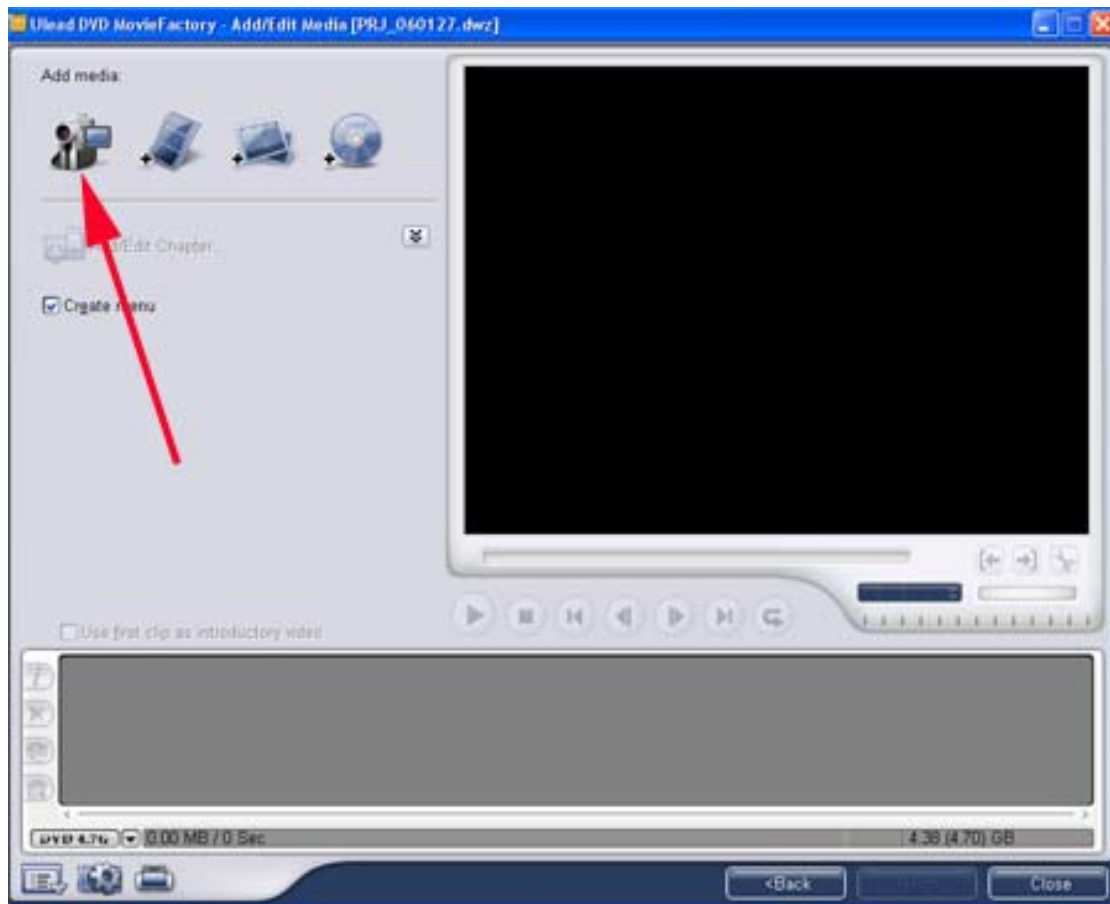
1. [DVD MovieFactory 4.0 Update Pack Build 4.03](#)
2. [DVD MovieFactory 4 Hauppauge devices support pack \( 6 in 1\)](#)

(Make sure you select the correct one for your model of TV card)

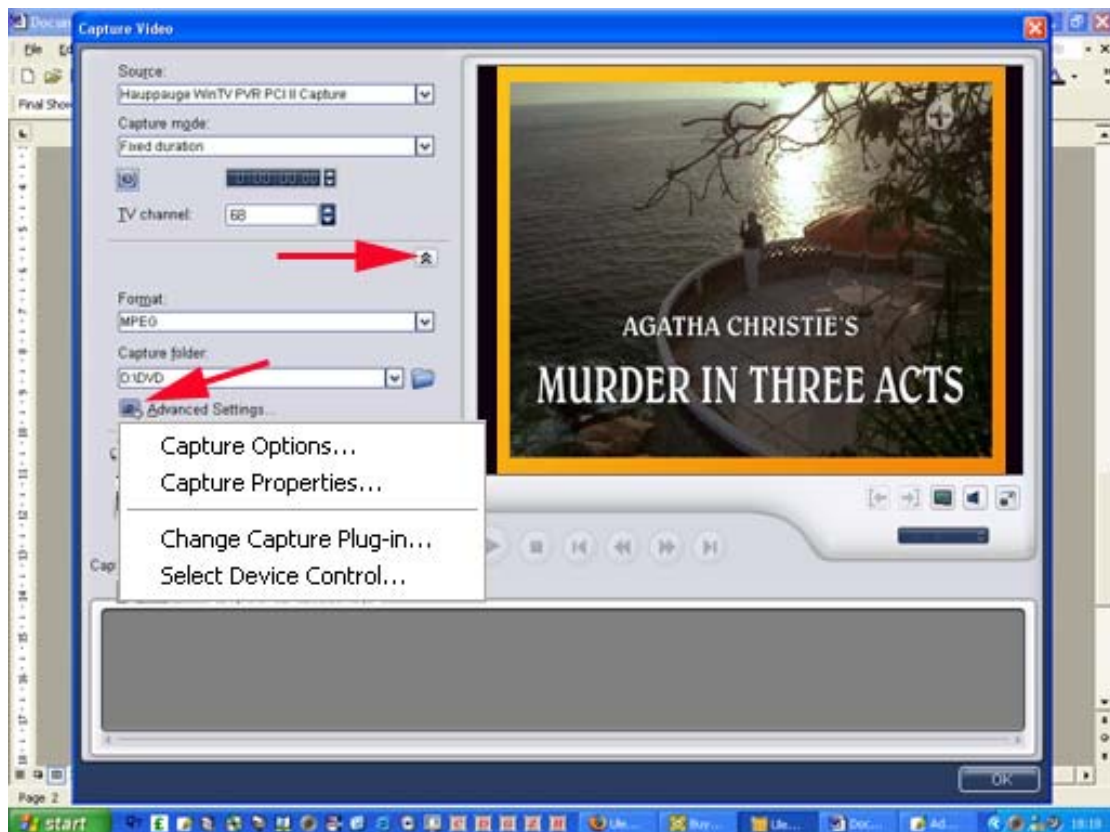
Now open Ulead DVD MovieFactory 4.0 and start a new DVD project



then Add Media



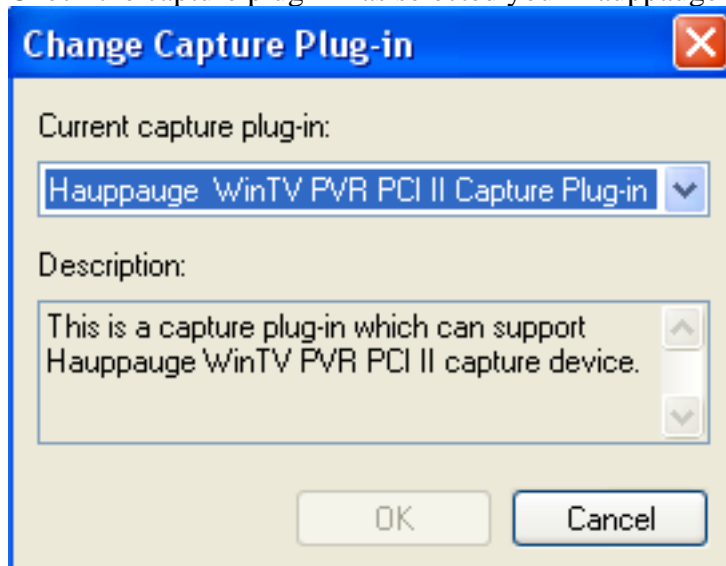
Click "Advanced Settings"



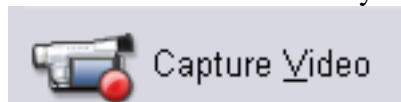
Capture properties will bring up a box, Make sure you select Antenna or cable as appropriate.



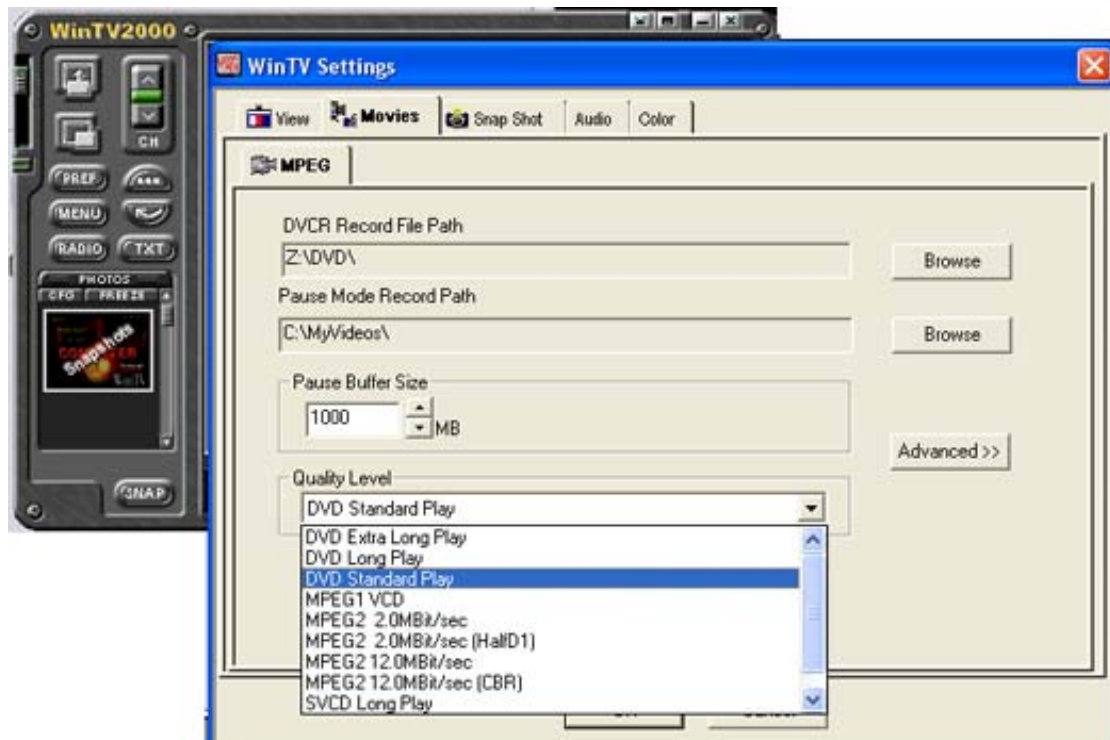
Check the capture plug in has selected your Hauppauge Device



Format should be MPEG (Hauppauge cards do not capture in AVI)  
Now choose where to save your capture to and press the capture icon.



If you have an earlier version of DMF or for some other reason are unable to capture with it, then use WinTV2000



Quality levels depend upon how much you want to squeeze onto the DVD.

Standard play = Bit rate 6400, Peak 8000 Variable – approx 1 hour

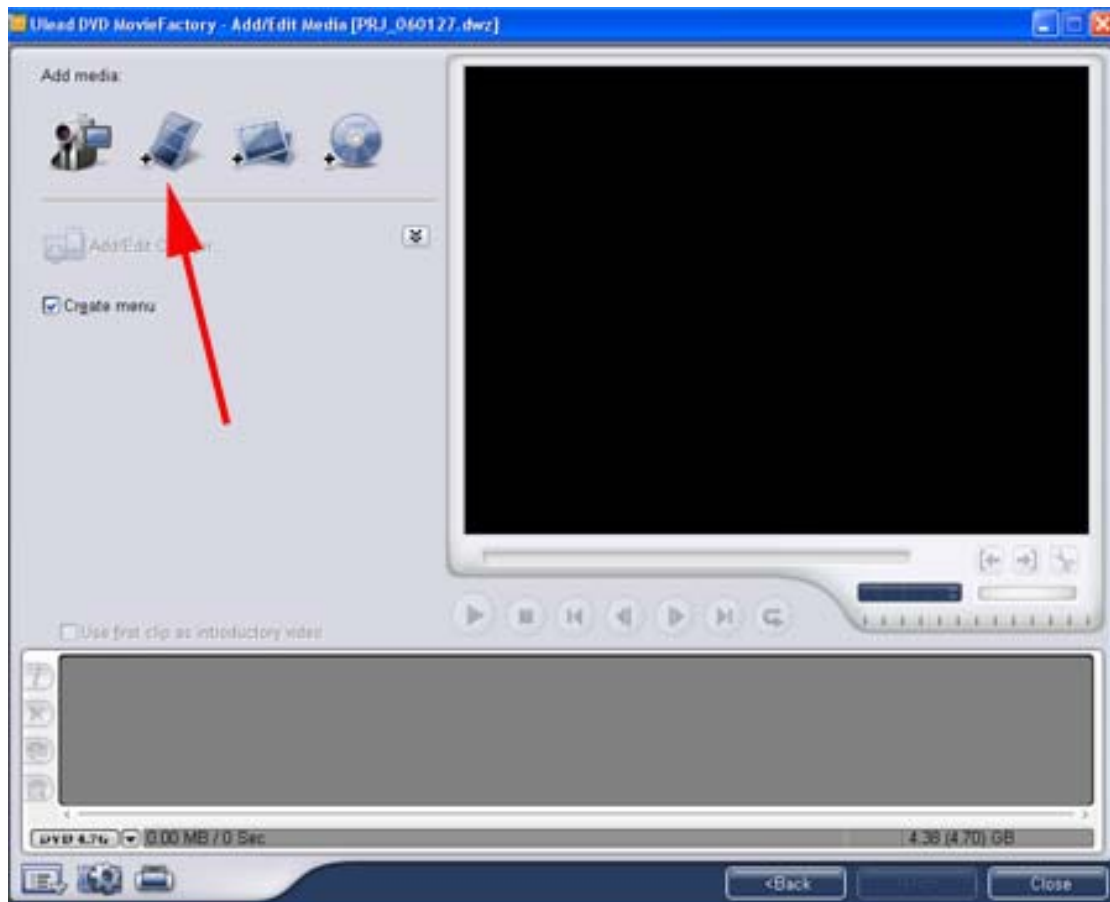
Long Play = Bit rate 4800, Peak 6200 Variable – approx 1.5 hours

Extra Long Play = Bit rate 3000, Peak 4400 Variable – approx 2 hours



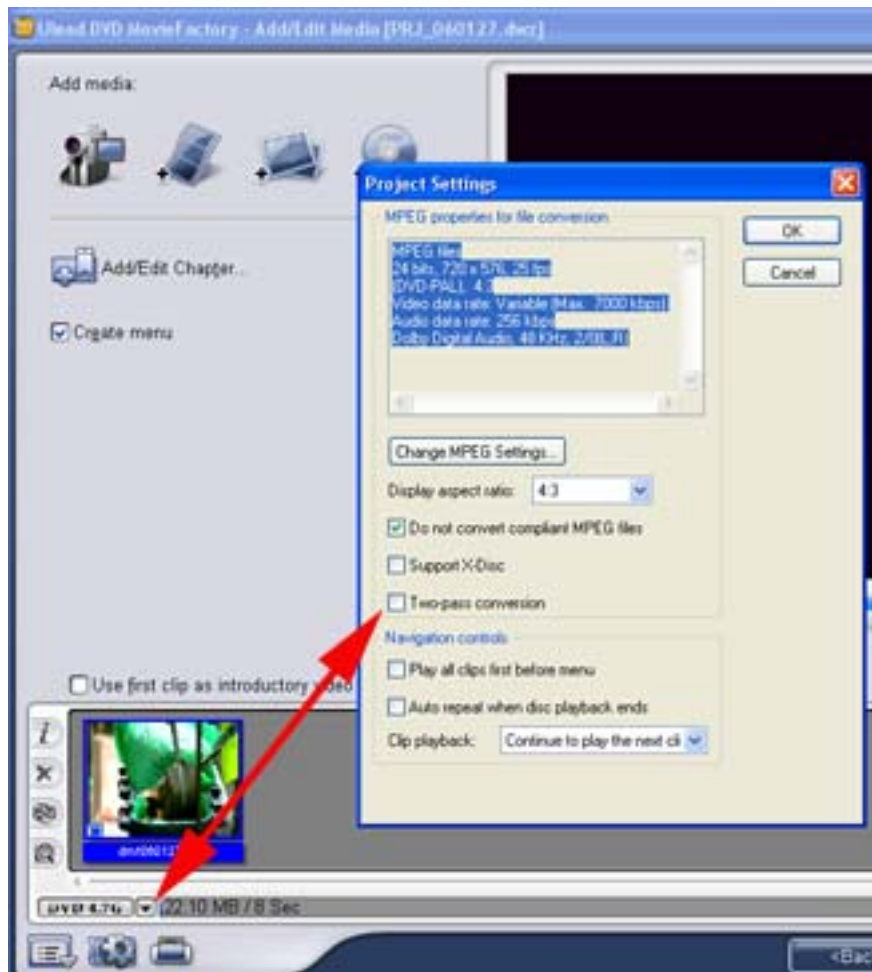
Now you just need to press the two highlighted record buttons.

After capture you will then need to open DMF and this time select the Add Video Files Button

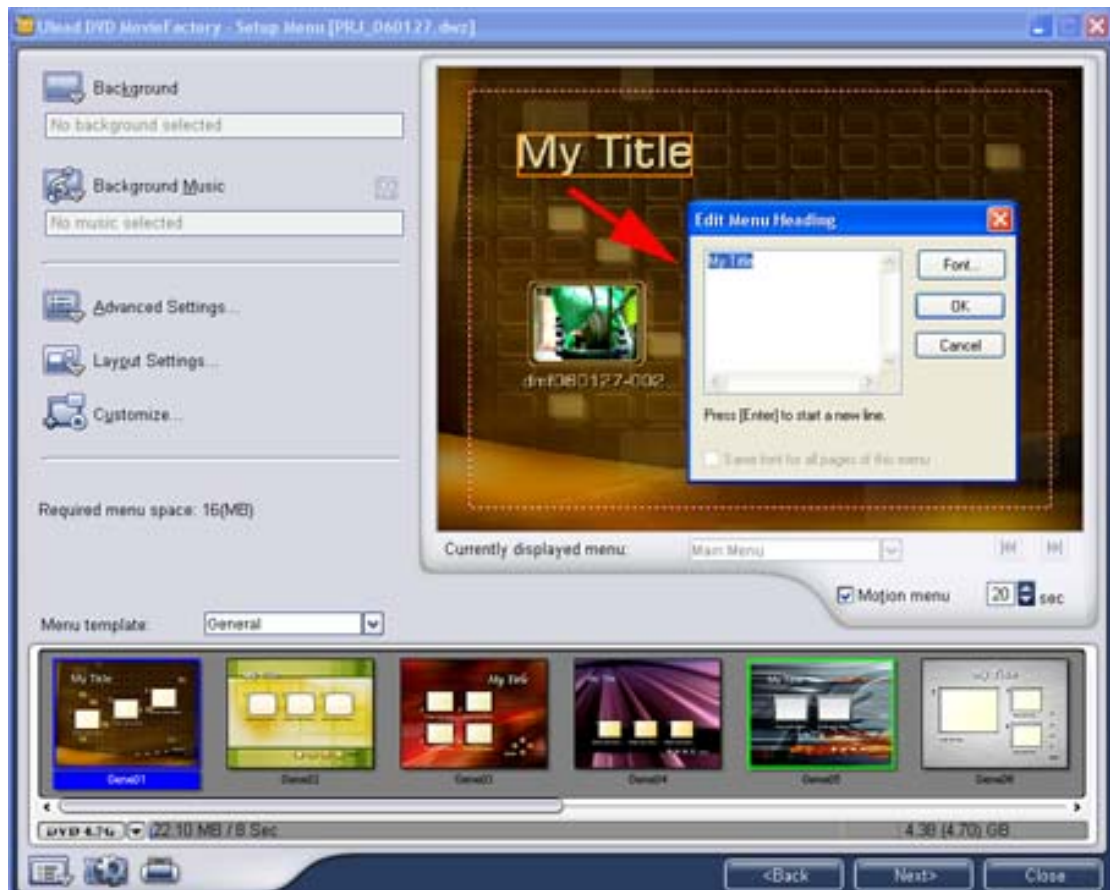


Next step is to click the cog wheel at the bottom left of the screen to bring up a pop up dialog box. Here you need to make sure that Do Not convert compliant MPEG files is selected.

It should now be simple enough to work out how to progress from this point. You can add/edit chapter if required. Selecting next brings you a several Menu Templates to choose from



Double click any writing you wish to alter and a pop up box will appear



Press “next” twice to bring up the burn page. Here you can give the DVD a Title and choose to record to disc, Hard Drive Folder or create an image file.

Different users have their own preferences at this point, mine is to burn to a Hard Drive Folder where I can now view the completed DVD with PowerDVD as a final check before burning it to a DVD disc.

Regards

Steve J