

# MULTI-FUNCTION JUMP STARTER



## INSTRUCTION MANUAL

Please read the instruction carefully before use



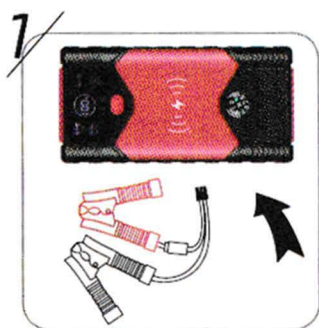
## Product information



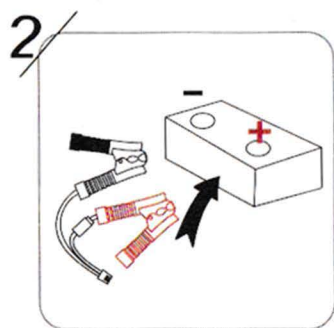
## B. TECHNICAL PARAMETER

|   |                                   |
|---|-----------------------------------|
| Model : J14                             | size : 17*9*4.5cm                 |
| Battery type: high rate lithium battery | Applicable models : 12V           |
| Input : 15V-1A or 5V-2A                 | Applicable temperature : -40~80°C |
| USBoutput : 5V-1A                       | Charging time: about 5 hours      |

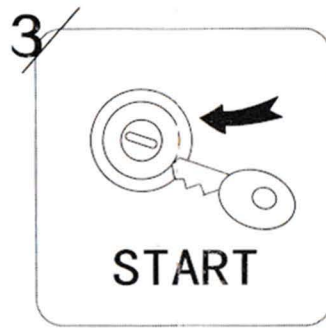
## C.Car starting steps



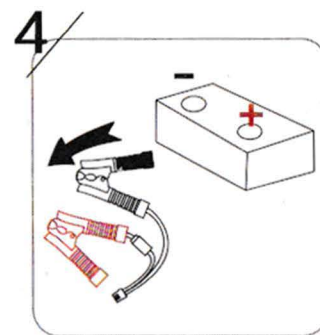
Battery clip insertion  
Power start terminal



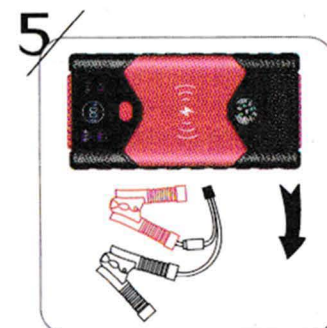
Red clip battery positive  
Black clip battery negative



Ignition start  
Ignition time < 3 seconds



Take the battery out of the  
battery Remove from battery



Take the battery out of  
the battery Remove from  
the power supply

### Important tips:

1. Before starting, make sure that the electronic equipment, air conditioner, lights, etc. are turned off;
2. the metal wire on the positive and negative pole of the battery clamp shall be fully contacted, and the dust or rust shall be cleaned first;
3. Make sure the power is sufficient, preferably full. When taking a taxi, the power may change greatly from time to time, which is a normal phenomenon. After starting the car, the charging will be restored in time. If the start-up is not successful twice, be sure to disconnect and find out the reason before operation. Pay attention to whether the temperature of clamp and starting power supply is too high every time you take a taxi.
4. If the car battery power is too low or no power, it is recommended to use the starting power directly without the battery line, and the starting effect will be better. Disconnect the positive / negative connection of the battery. Connect the positive and negative wires correctly with the clamp, and then try to start the battery. After starting, do not turn off the ignition, and then connect the battery line back to its original state ( Remember: don't take both positive and negative wires or touch metal position at the same time.)

### Start up process:

1. Before use, please make sure that the power consumption is not less than 60%. If the power consumption is less than 60%, it is forbidden to start the car (try to start the car under the condition of full charge as far as possible to ensure the service life of the power supply),
2. Clamp the positive (+) pole of the battery with the red clamp and the negative (-) pole of the battery with the Black clamp, and immediately go to the cab to start the car. If the smart clip is used, the green light of the smart clip will be on for a long time.
3. Please start the car within 30 seconds, otherwise the power of the starting power will be lost to the battery. If the smart clip is used, the power will be cut off automatically after 30 seconds, and it needs to be reconnected
4. Remove the starting power supply and battery clamp within 20 seconds after starting, and do not plug the battery clamp into the starting power supply for a long time.
5. The starting time of each taxi should not exceed 3 seconds. If the starting is not successful, please remove it from the car and wait for 2-3 minutes (after the temperature of the clip protection module decreases) before reconnecting and starting

## D. Function operation instructions

### Switch operation instructions

The switch controls the function of the whole circuit board. It is recommended to turn off the switch before starting, otherwise the power supply may change greatly when starting, (Need to recharge to restore the correct power display).

### Function keys instructions

On the premise of turning on the main switch, short press the function button once to view the power on the screen. bright After the screen, long press the function button for 3 seconds to turn on the lighting, and then short press to switch lighting Mode, followed by: strong light, flash, SOS, off. Support wireless charging, press power After the key is turned on, the phone is put down and charged immediately.

Warm tips: mobile phone with wireless charging function can realize wireless charging.

### E. Description of electric quantity display

The LCD display shows 0-100% or 4 cells

Charging display: when charging is connected, the display in flashes, and the number or column of electric quantity refers to the current electric quantity

Discharge display: power on display current power out, USB output, display out 5v2.1a

### F. Charge and discharge instructions

Power host built-in voltage rise and fall, please use the product original adapter charging, charging, please be careful. It is necessary to use a regular charger that matches its parameters. Do not use a charger that does not match. Or poor quality charger charging, otherwise may lead to power host damage or safety accidents. Please do not connect to the over power product when it is out.

### G. Name and content of harmful substances in products

| Product name | Toxic and harmful substances or elements |      |      |          |       |        |
|--------------|--|------|------|----------|-------|--------|
|              | (Pb)                                     | (Hg) | (Cd) | (Cr(VI)) | (PBB) | (PBDE) |
| host         | 0  | 0    | 0    | 0        | 0     | 0      |

0: indicates that the content of the hazardous substance in all homogeneous materials of the component is within the limits specified in 2002 / 95 / EC (RoHS) standard. The quantity is below the requirement.

## H. Warning

1. The operation steps of car emergency start cannot be reversed.
2. In case of failure, please contact the dealer to deal with it. It is forbidden to disassemble the main engine without authorization, otherwise it may cause trouble. There was a safety accident.
3. It is forbidden to connect the positive and negative poles of the power supply, reverse connection or indirect short circuit, otherwise it will cause safety accidents.
4. When using or charging, if you find any abnormality, please stop using and consult customer service.
5. Please keep away from high temperature or humid environment, do not put in direct sunlight.
6. Children are not allowed to touch this product to avoid safety accidents.
7. When charging the product, please put it in an open position and keep it under the care of an adult.
8. Please be sure to read the instructions and follow the instructions. If you have any questions, please consult the customer service at any time.
9. It is strictly forbidden to disassemble, pierce, refit, short circuit the product or put water, fire or expose it in the air. Avoid product damage or other hazards when the temperature is higher than 65 °C.
10. Do not connect the positive and negative poles directly or indirectly with the conductor to avoid safety accidents.

### I. Maintenance Tips

1. this product can effectively deal with the problems of the battery contingency of low battery energy and low temperature. The car started up failure. But it can only be used as emergency equipment, and it can not replace the automobile battery. Frequently used or professional rescue. If the battery is aged, after starting the car, and Replace the battery with a new one. After the car starts, please supplement the power supply host power in time for the next time.
2. do not start the car when the power is low, otherwise it will easily cause the battery to be over discharged and the power supply will be damaged.
3. the best maintenance method of emergency starting power supply of automobile is to use it lightly and quickly release and charge it. Used. The higher the power and the more times, the faster the battery loss will be. Start the power supply with deep discharge. The smaller the degree, the longer the service life, the more frequent full charge and discharge should be avoided.
4. the start port is the direct output port of the battery, without protection, and it is not allowed to directly connect to the power-free port. The use of voltage protection products may cause power damage to the product.
5. the power supply has self-consumption, and it needs to be checked and maintained regularly when it is not used for a long time (more than 30 days). A certain amount of electricity and charge and discharge at least once every 2 months. Otherwise, power damage may result.

## J. Warranty instructions

After sales service is strictly in accordance with the "law of the people's Republic of China on the protection of consumers' rights and interests" and the "law of the people's Republic of China on the protection of consumers' rights and interests" According to the product quality law of the people's Republic of China, after-sales Three Guarantees service is implemented, and the service contents are as follows:

1. Within 7 days from the next day when you sign for the product, the product quality problems caused by non-human reasons After confirmation by the manufacturer, you can enjoy the service of return and exchange without reason;
2. Within 8-15 days from the next day when you sign for the product, the product quality is not caused by human factors Problems, confirmed by the manufacturer, can enjoy free replacement or maintenance services;
3. Within 12 months (within 3 months of accessories) from the next day when you sign for the product, the product is caused by non-human factors If the product quality problem is confirmed by the manufacturer, you can enjoy free maintenance service.

### Non warranty regulations

1. Unauthorized maintenance, misuse, collision, negligence, over discharge, fluid injection, accident, Starting, incorrect use of non parts of the product or parts that do not meet the parameters, or tearing, Alter the label and production date.
2. The validity period of San Bao has been exceeded
3. Damage caused by force majeure.
4. Performance failure of the product and accessories due to human factors.
5. Do not operate or maintain according to the instructions.
6. Normal battery loss and performance degradation caused by the use of power supply.



Executive standard: GB4943.1-2011  
GB31241-2014

# WARRANTY CARD

If you need warranty service, please show this warranty card and fill in the relevant contents in detail The customer provides a 12-month warranty for the main engine and a 3-month warranty for the accessories from the next day after the product is received Service. For products not covered by warranty, our company can provide maintenance service, but the maintenance cost and cost are low The freight should be borne by the customer  
Note: This product is for commercial use (such as auto repair, professional rescue, etc.), only one month warranty

|                  |  |                  |  |
|------------------|--|------------------|--|
| Product model    |  | Factory number   |  |
| Purchase date    |  | Maintenance date |  |
| Customer name    |  | contact number   |  |
| Customer address |  |                  |  |
| Sales unit       |  |                  |  |

### Product anomaly description

|  |
|--|
|  |
|--|